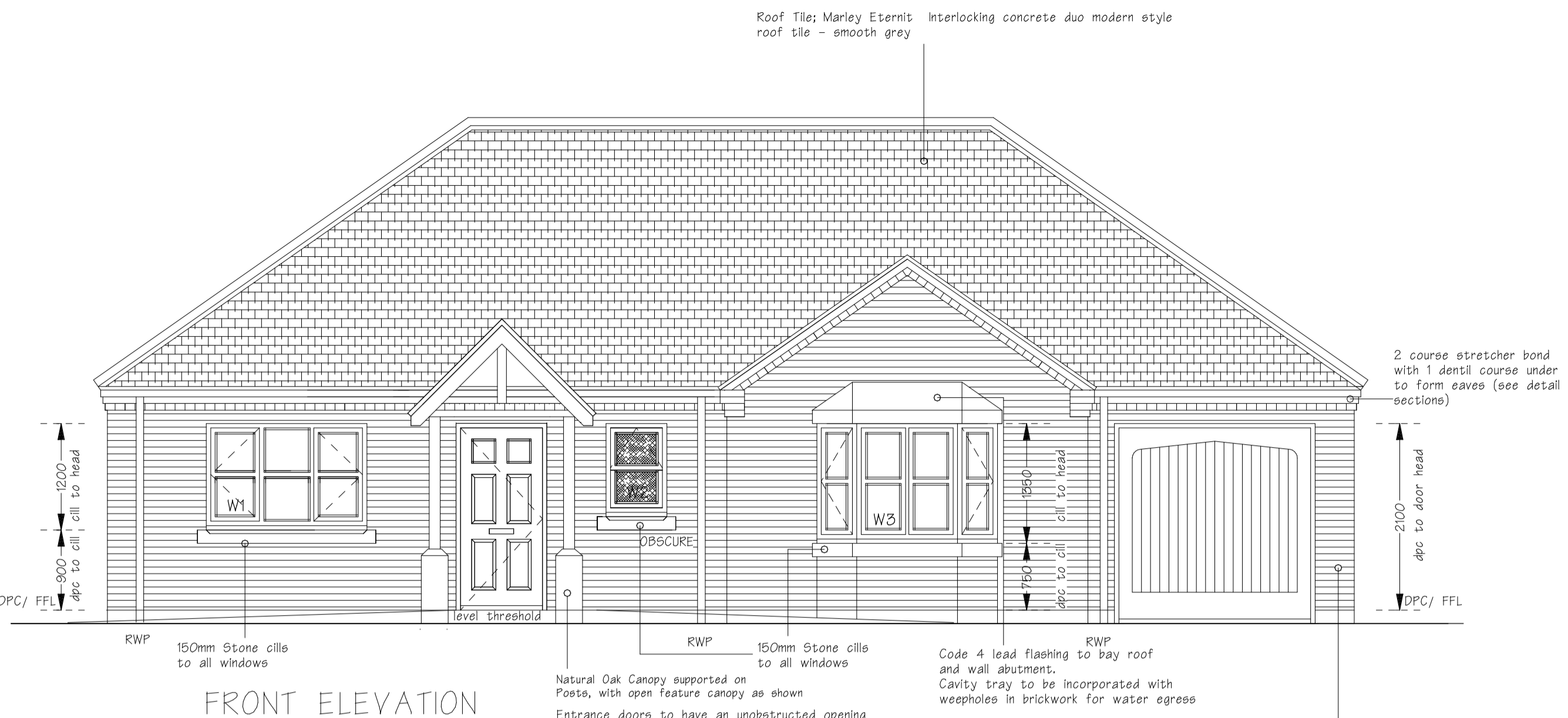
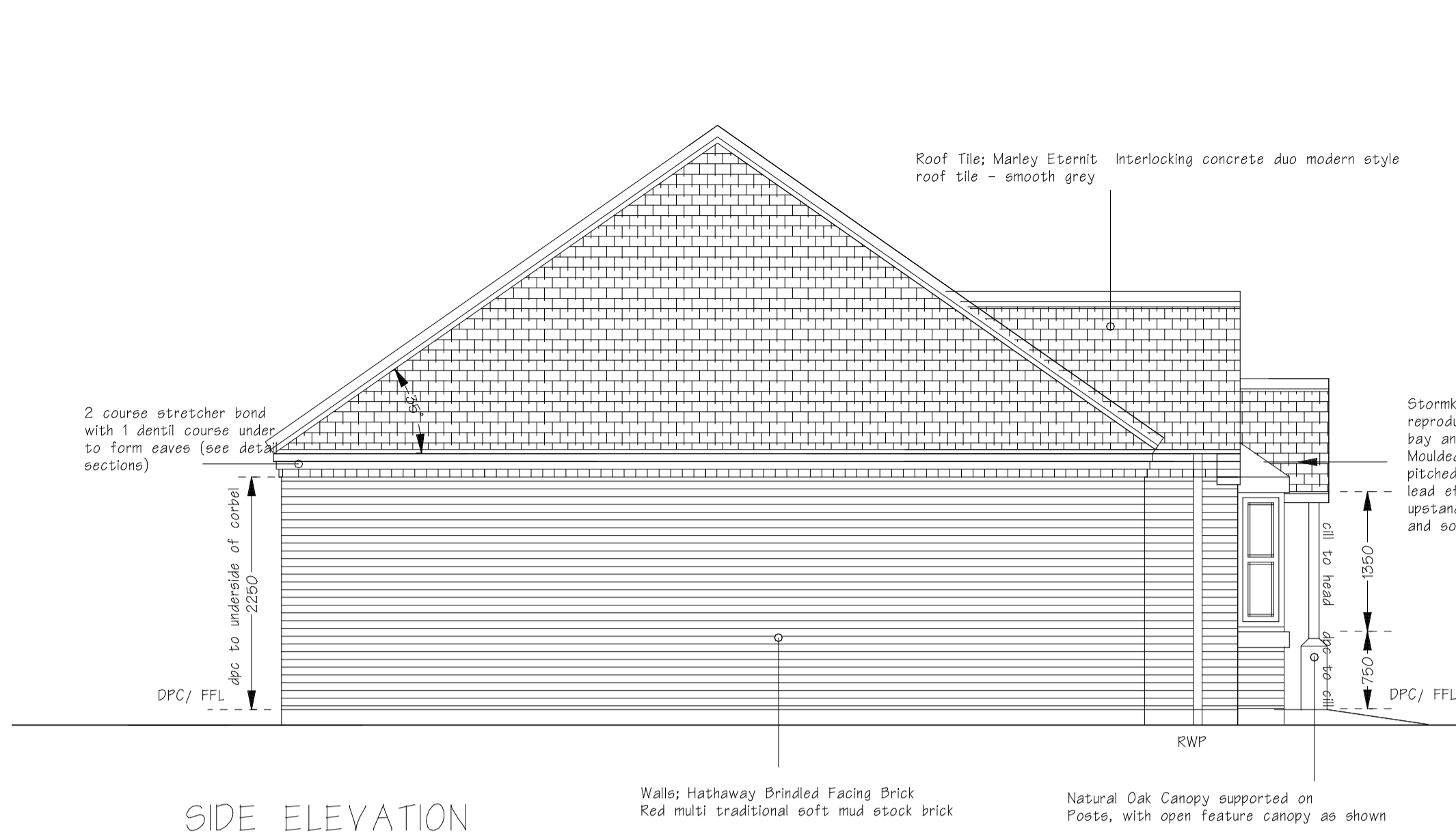


preliminary



FRONT ELEVATION

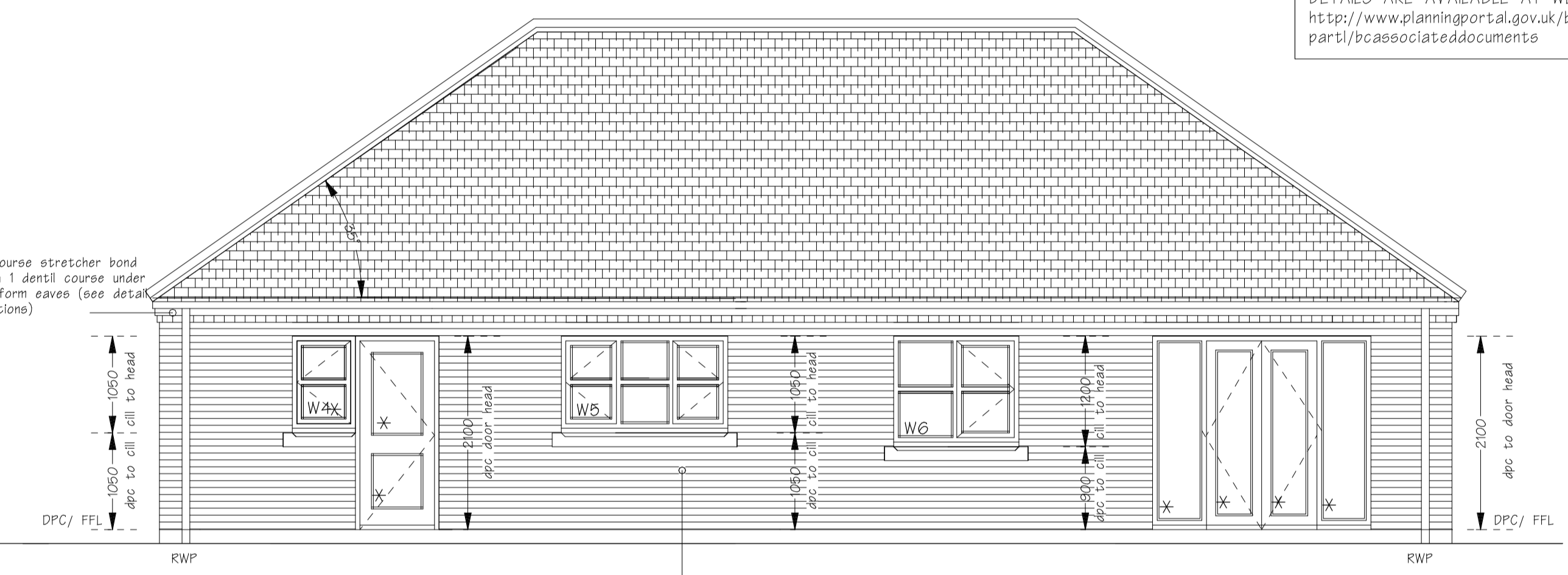
Provide external hand standing area to facilitate use of a ladder or equipment to clean and maintain all windows



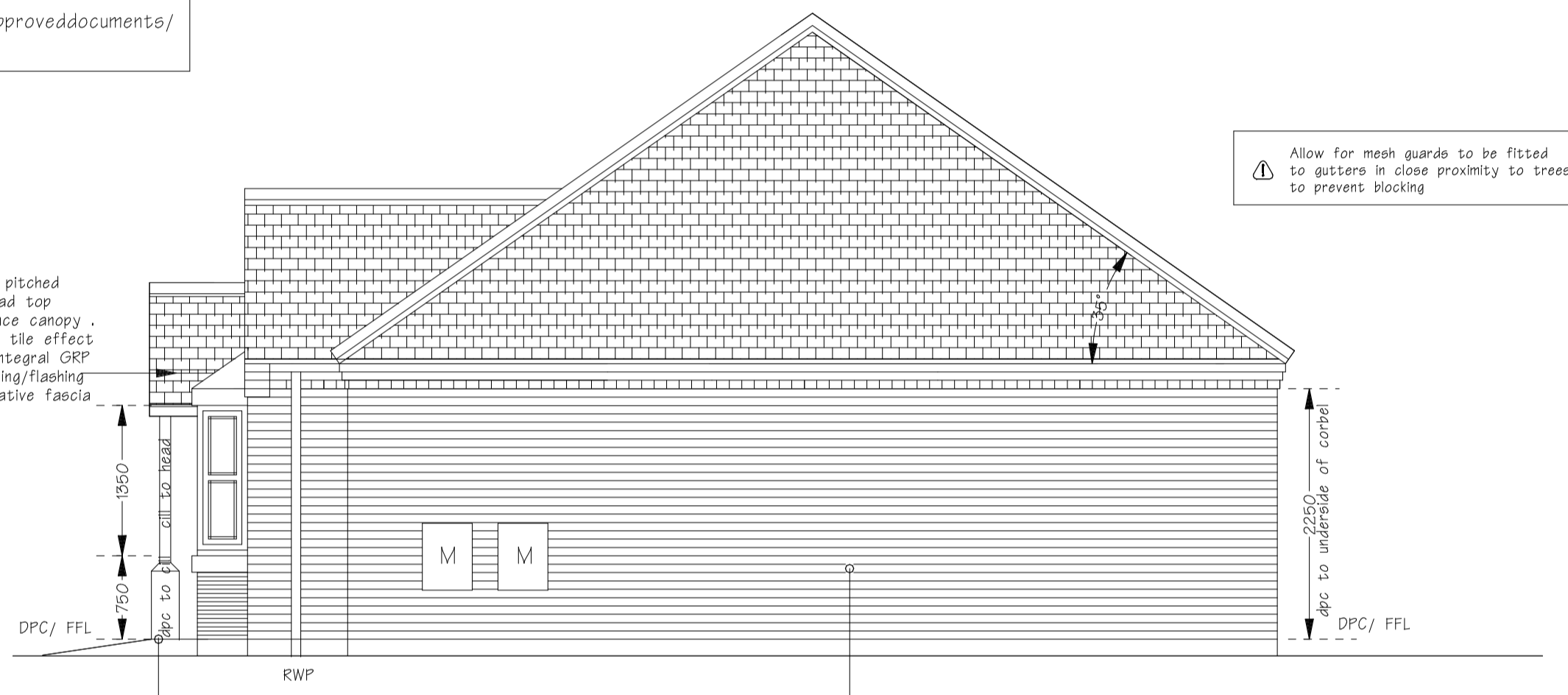
SIDE ELEVATION

Stormking GRP pitched reproduction lead top bay and entrance canopy. Moulded with a tile effect pitched roof. Integral GRP lead effect fixing/flashing upstand, decorative fascia and soffit.

EXTERNAL MATERIALS
Walls: Hathaway Brindled Facing Brick Red multi traditional soft mud stock brick
Roof Tile: Marley Eternit Interlocking concrete duo modern style roof tile - smooth grey
Window: White UPVC double glazed units



REAR ELEVATION



SIDE ELEVATION

Allow for mesh guards to be fitted to gutters in close proximity to trees to prevent blocking

This symbol indicates significant hazards which require further action. In addition to hazards and risks generally associated with works detailed on the drawing.

NOTE :
ACCREDITED CONSTRUCTION DETAILING TO BE FOLLOWED ON SITE.
DETAILS ARE AVAILABLE AT WEBSITE:
<http://www.planningportal.gov.uk/buildingregulations/approveddocuments/part1/bcasassociateddocuments>

TYPE C - Plot 2

REVISIONS

CLIENT
William Tyler Developments

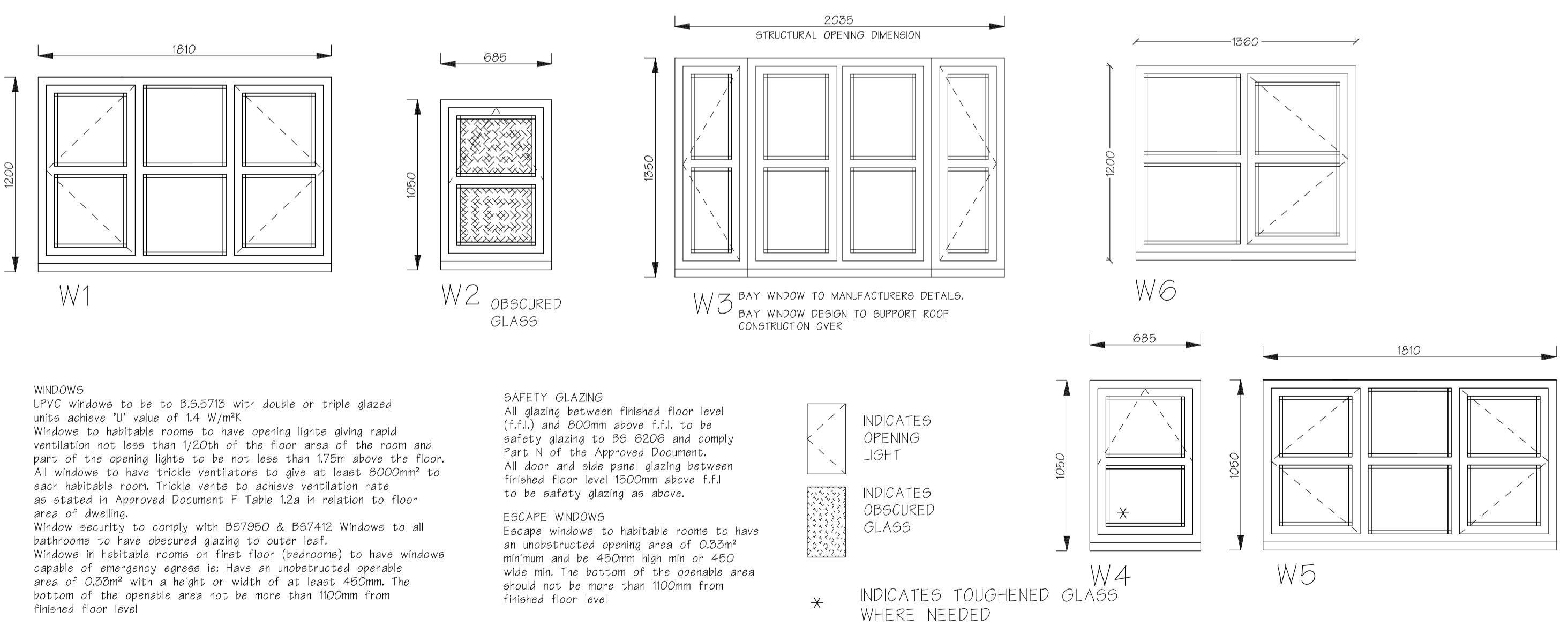
PROJECT
Residential Development
New Road
Hixon

DRAWING
ELEVATIONS

SCALE	DATE	DRAWING NO.
1:50@A1	10/01/17	1925.203

The copyright of this drawing is vested in the Architect. It must not be copied or reproduced without consent. Figured dimensions to be used in preference to scaled and all dimensions must be checked on site by the Contractor.

WINDOW SCHEDULE



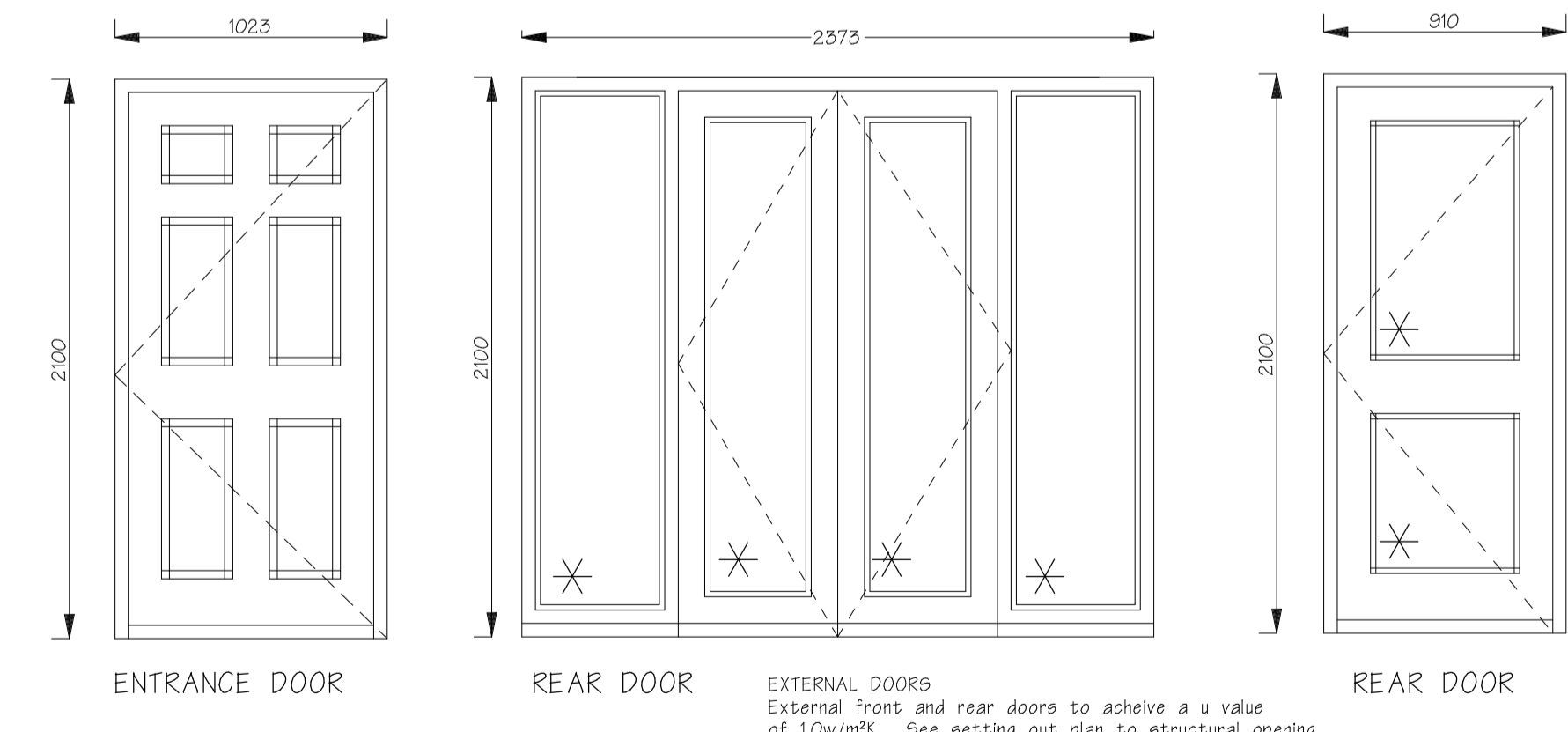
WINDOWS
UPVC windows to be to B.S.B715 with double or triple glazed units achieve 'U' value of 1.4 W/m²K
Windows to habitable rooms to have opening lights giving rapid ventilation not less than 1/20th of the floor area of the room and part of the opening lights to be not less than 1.75m above the floor.
All windows to have trickle ventilators to give at least 8000mm² to each habitable room. Trickle vents to achieve ventilation rate as stated in Approved Document F Table 1.2a in relation to floor area of dwelling.
Window security to comply with B57950 & B57412 Windows to all bathrooms to have obscured glazing to outer leaf.
Windows in habitable rooms on first floor (bedrooms) to have windows capable of emergency egress let have an unobstructed operable area of 0.33m² with a height or width of at least 450mm. The bottom of the operable area not be more than 1100mm from finished floor level

SAFETY GLAZING
All glazing between finished floor level (F.F.L.) and 800mm above F.F.L. to be safety glazing to BS 6206 and comply Part N of the Approved Documents.
All door and side panel glazing between finished floor level 1500mm above F.F.L. to be safety glazing as above.

ESCAPE WINDOWS
Escape windows to habitable rooms to have an unobstructed opening area of 0.33m² minimum and be 450mm high min or 450 wide min. The bottom of the operable area should not be more than 1100mm from finished floor level

INDICATES OPENING LIGHT
INDICATES OBSCURED GLASS
* INDICATES TOUGHENED GLASS WHERE NEEDED

METER BOX POSITIONS FOR INDIVIDUAL PLOTS
REF Utility Meter Box Positions - Site plan



Entrance doors to have an unobstructed opening width of 775mm minimum. Unobstructed opening is measured from face of the door stop on the latch side to face of the door when open at 90°. Entrance door to have level threshold for wheelchair access.

EXTERNAL DOORS
External front and rear doors to achieve a u value of 1.0W/m²K. See setting out plan to structural opening sizes.
Front entrance doors to have an unobstructed opening width of 775mm minimum. Unobstructed opening is measured from face of the door stop on the latch side to face of the door when open at 90°. Entrance door to have level threshold for wheelchair access.